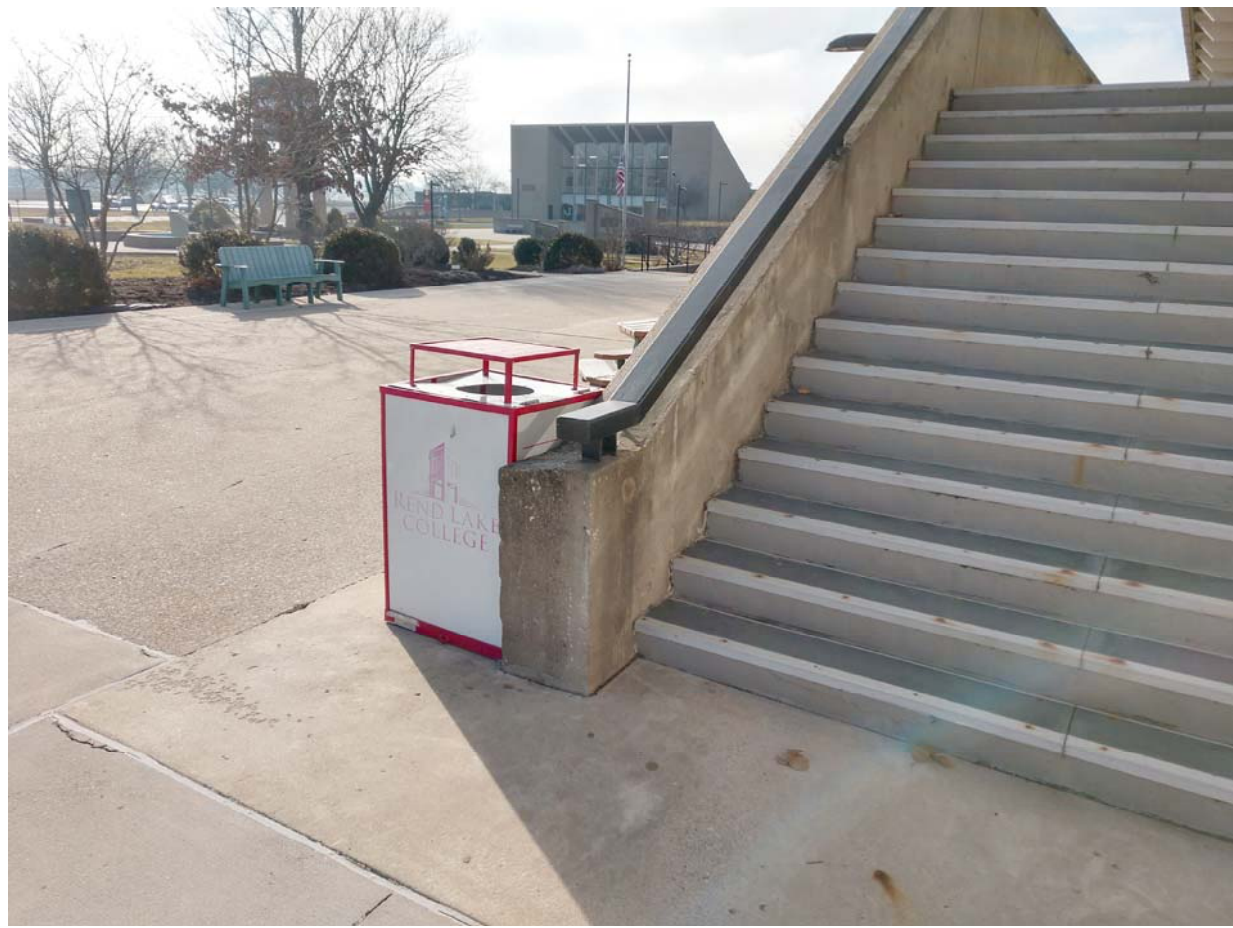




PICTURE No. 1



PICTURE No. 2

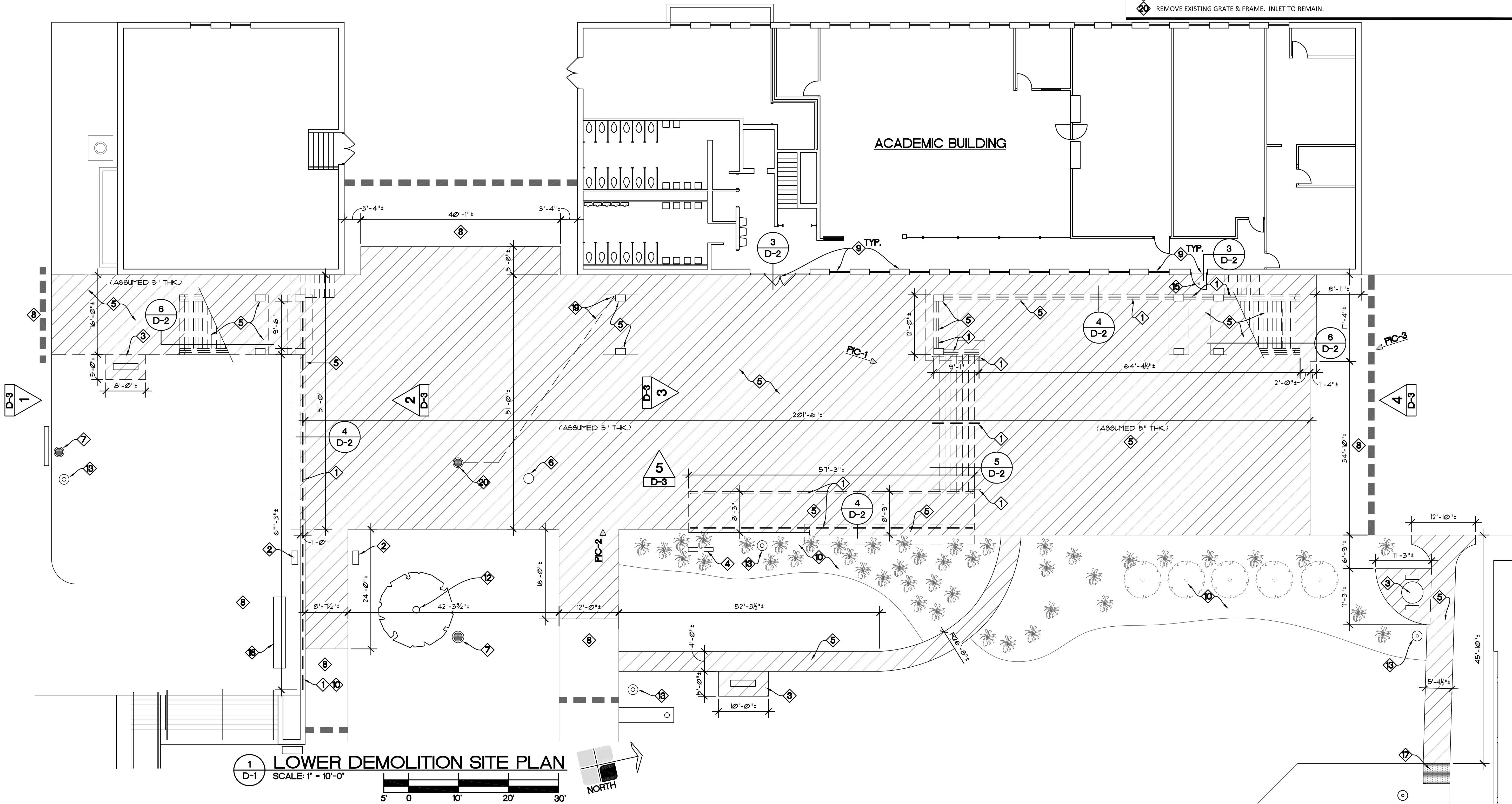


PICTURE No. 3

DEMOLITION KEY NOTES '◇'

(APPLIES TO SHEETS D-1 AND D-3)

- 1 REMOVE EXISTING STEEL GUARDRAIL SYSTEM AND HANDRAILS.
- 2 EXISTING ELECTRICAL BOX TO REMAIN. (HAND-HOLE).
- 3 REMOVE EXISTING CONCRETE BENCH/TABLE AND PAD.
- 4 REMOVE EXISTING BUILDING SIGN AND TURN OVER TO THE COLLEGE.
- 5 REMOVE EXISTING CONCRETE PATIO, STEPS, RETAINING WALL AND RAMP IN THEIR ENTIRETY, INCLUDING THE CONCRETE OVERPASS, COLUMNS AND ALL FOOTINGS. CONCRETE FOOTINGS MAY REMAIN IF THEY DO NOT IMPACT NEW CONSTRUCTION. EXISTING AGGREGATE BASE COURSE TO BE REMOVED.
- 6 EXISTING SANITARY MANHOLE TO REMAIN.
- 7 EXISTING STORM MANHOLE TO REMAIN. PROVIDE EROSION PROTECTION.
- 8 EXISTING CONCRETE TO REMAIN.
- 9 INSTALL PROTECTION OF EXISTING BUILDING, WINDOWS AND DOORS DURING DEMOLITION WORK.
- 10 REMOVE EXISTING LANDSCAPING INCLUDING MULCH, TREES AND SHRUBS.
- 11 REMOVE, STORE, AND PROTECT EXISTING BUILDING SIGN FOR REINSTALLATION.
- 12 EXISTING TREE TO REMAIN.
- 13 EXISTING LIGHT AND BASE TO REMAIN.
- 14 COORDINATE WITH ELECTRICAL FOR REMOVAL OF EXISTING LIGHT FIXTURES.
- 15 EXISTING DRAIN TO BE REMOVED. CAP PIPE BELOW GRADE.
- 16 REMOVE RAIL ANCHORS AND SEAL HOLES IN EXISTING CONCRETE WALL TO REMAIN WITH NON-SHRINK GROUT.
- 17 EXISTING PAVERS TO REMAIN. RESET AS NECESSARY.
- 18 EXISTING CONCRETE BENCH TO REMAIN.
- 19 REMOVE EXISTING DOWNSPOUTS FROM GUTTER TO GRADE & DRAIN PIPE FROM GRADE TO INLET.
- 20 REMOVE EXISTING GRATE & FRAME. INLET TO REMAIN.



Seal:

Signature:

Date:

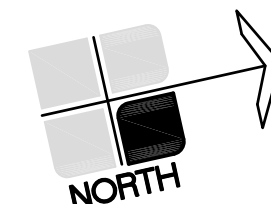
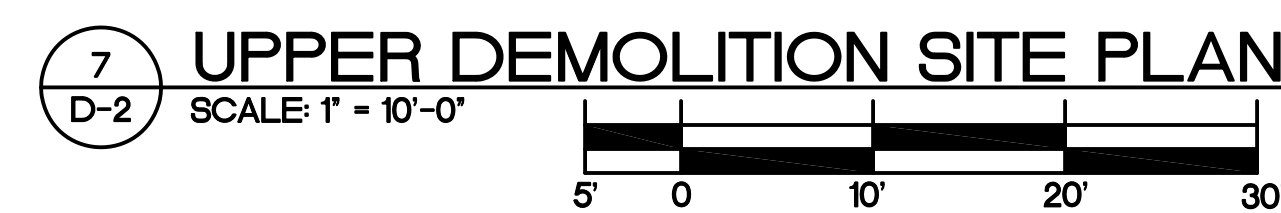
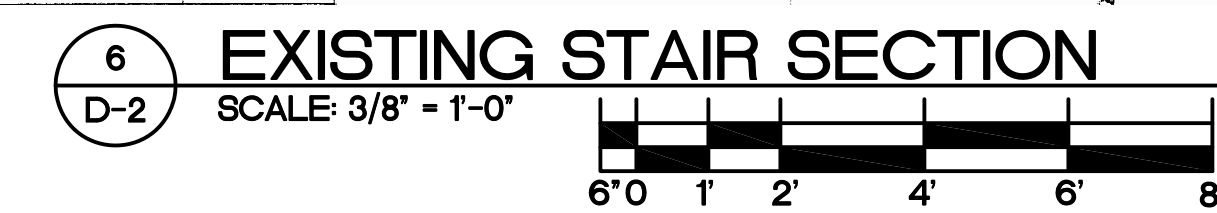
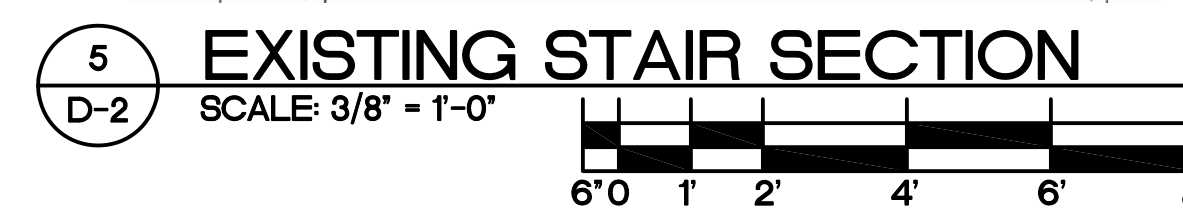
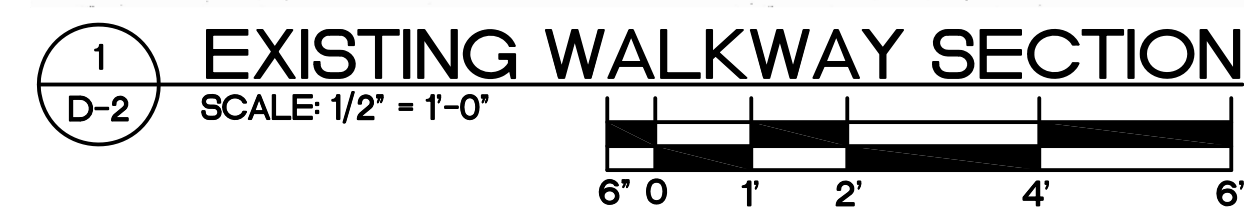
Project Title:
OVERPASS DEMOLITION

Proj. No.: 2054
Drawn By: ERB
Checked By:
Approved By:
Date: MAR. 19, 2021
Rev:
1 By: Date:
2 By: Date:
Sheet Title:
LOWER
DEMOLITION SITE
PLAN, PICTURES &
NOTES

Sheet No.:

D-1
of 3 Sheets

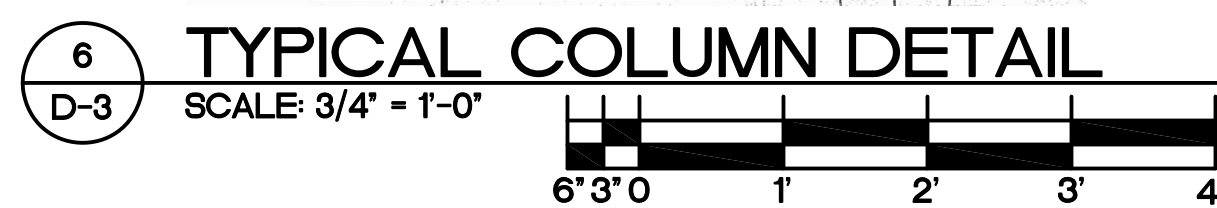
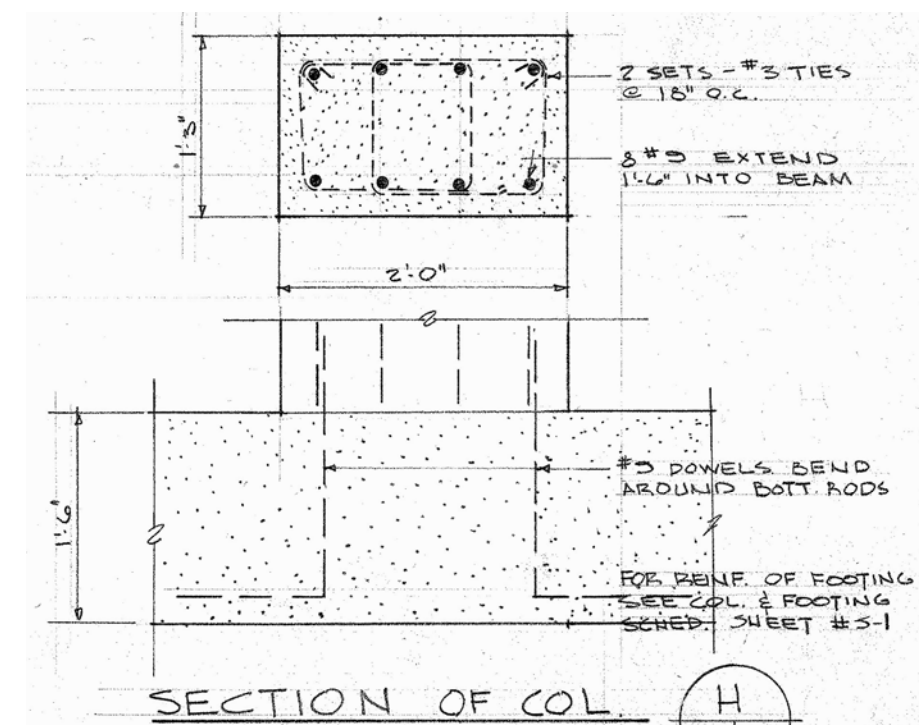
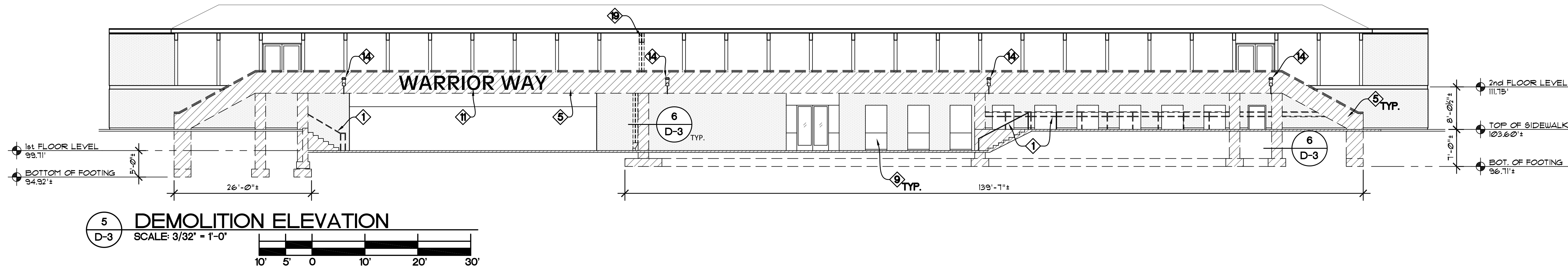
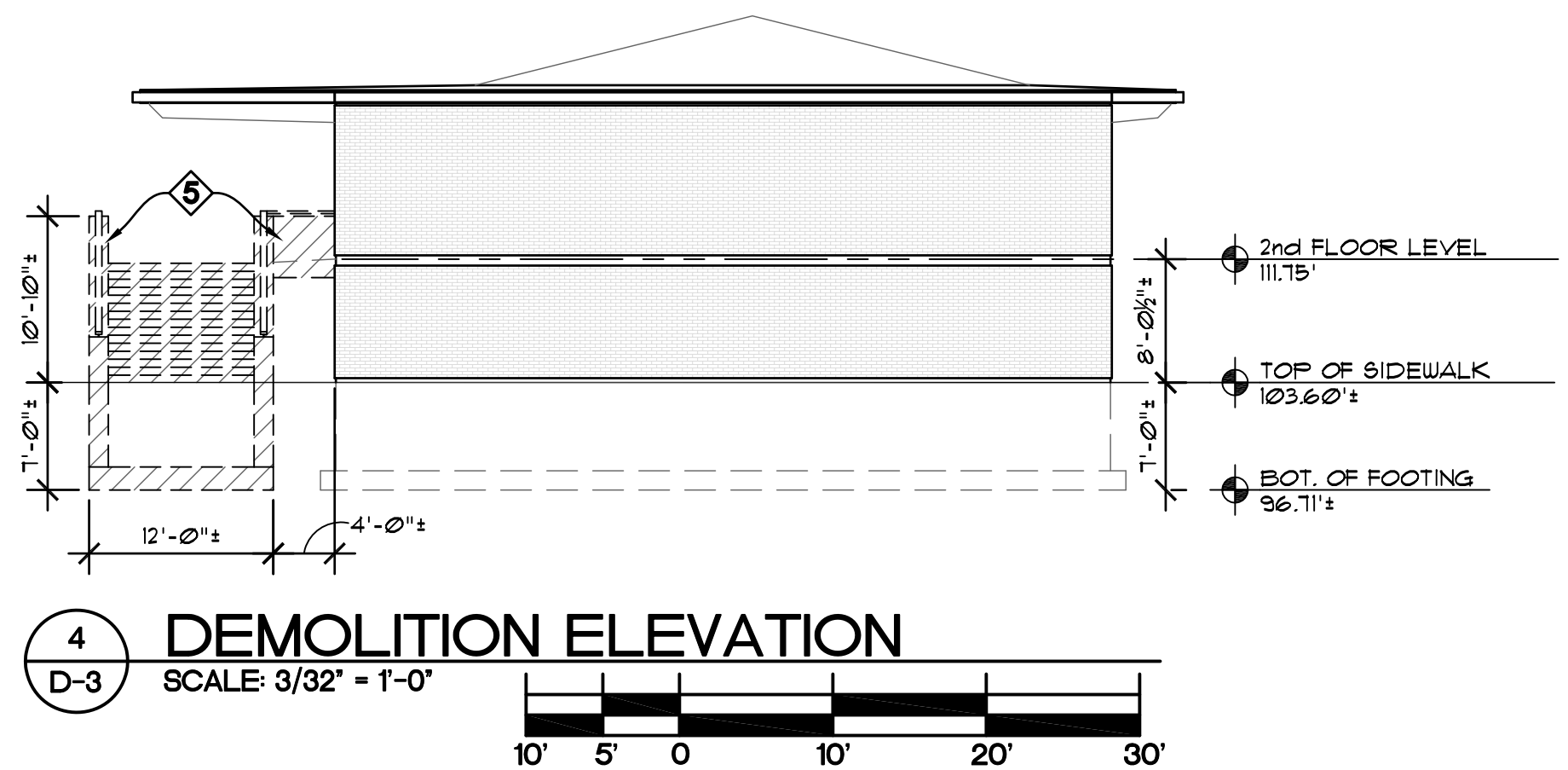
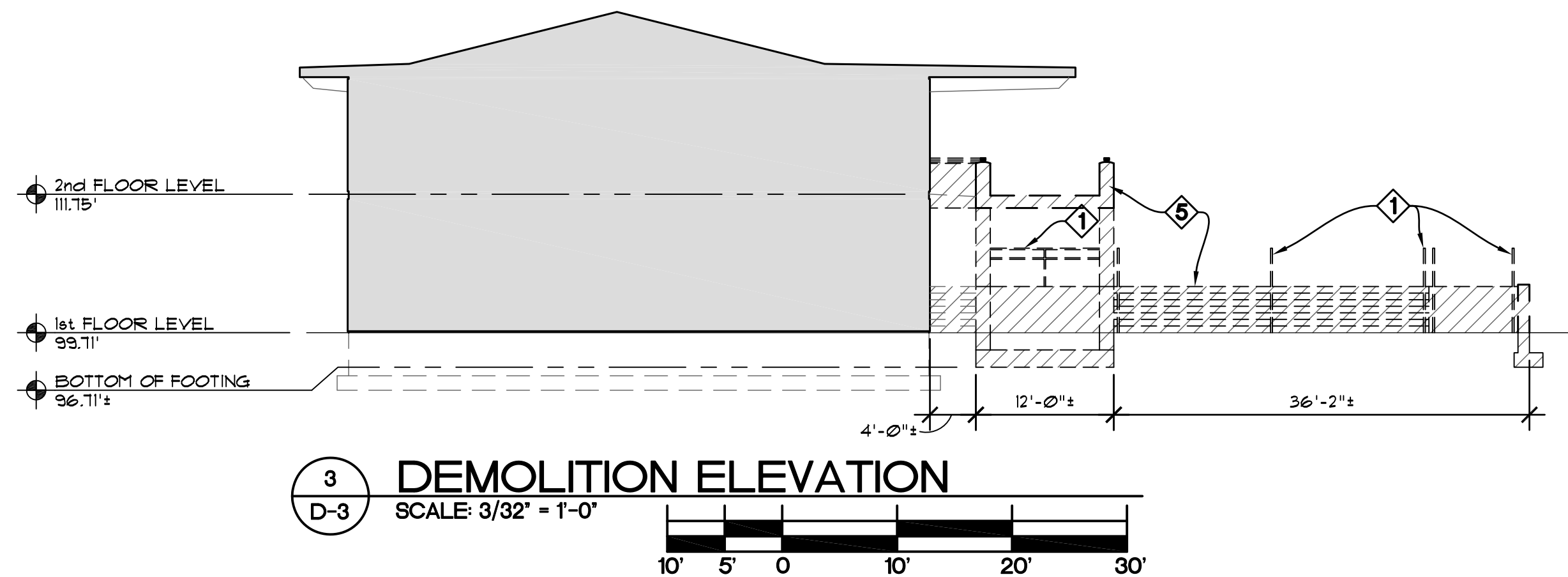
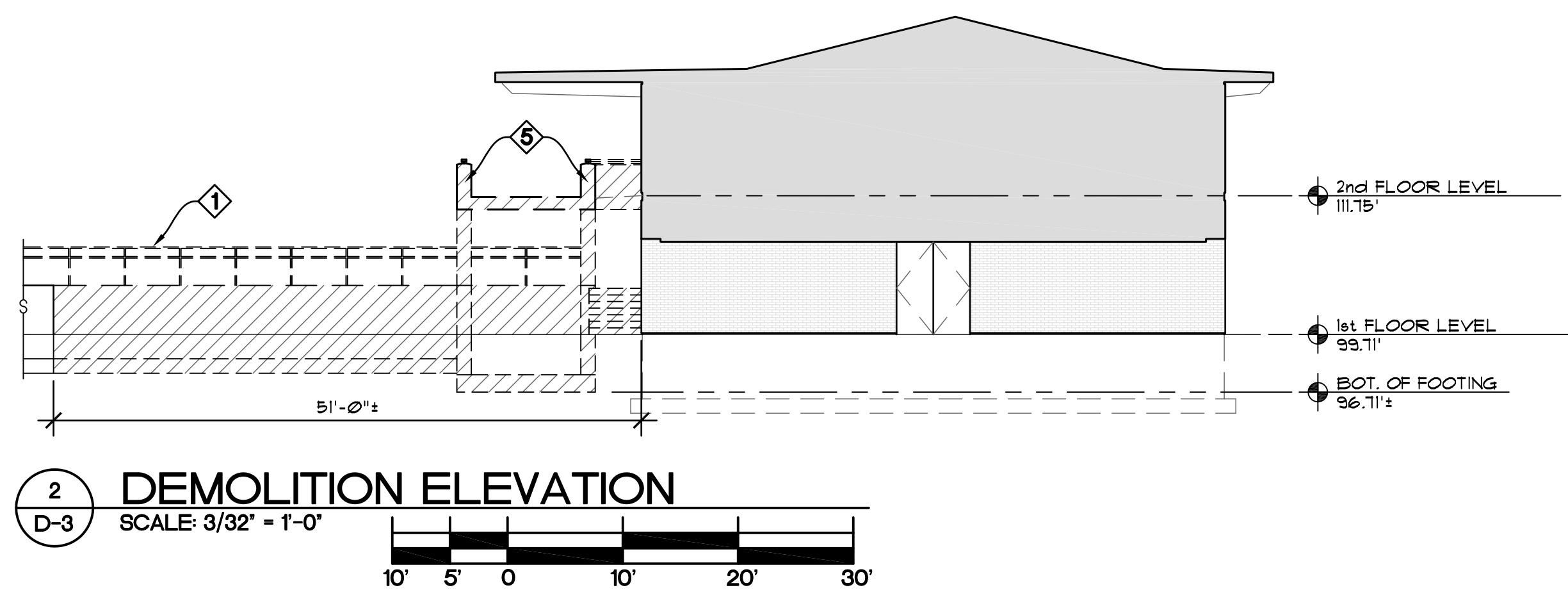
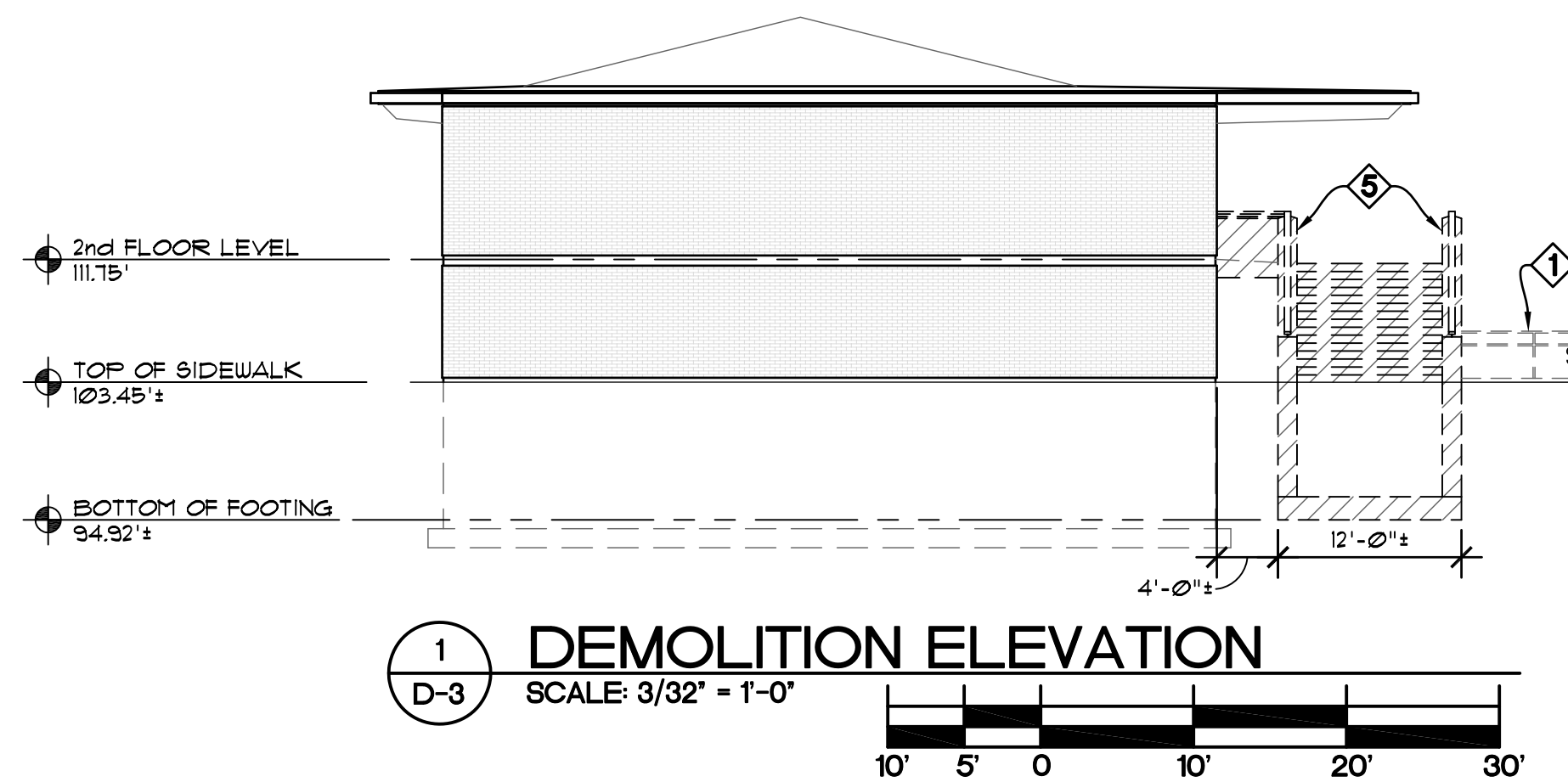
THESE DRAWINGS HAVE BEEN COMPLETED FROM VARIOUS EXISTING DRAWINGS AND FIELD SKETCHES AND ILLUSTRATE THE GENERAL LOCATION OF ITEMS. MINOR DIFFERENCES MAY BE POSSIBLE. THE CONTRACTOR IS RESPONSIBLE FOR VISITING THE SITE AND FOR THE VERIFICATION OF EXISTING CONDITIONS.



D-2

SEE SHEET D-1 FOR KEY NOTES

THESE DRAWINGS HAVE BEEN COMPLETED FROM VARIOUS EXISTING DRAWINGS AND FIELD SKETCHES AND ILLUSTRATE THE GENERAL LOCATION OF ITEMS. MINOR DIFFERENCES MAY BE POSSIBLE. THE CONTRACTOR IS RESPONSIBLE FOR VISITING THE SITE AND FOR THE VERIFICATION OF EXISTING CONDITIONS.



Seal:

Signature:

Date:

Project Title:
OVERPASS DEMOLITION

Proj. No.: 2054

Drawn By: ERB

Checked By:

Approved By:

Date: MAR. 19, 2021

Rev:

1 By: Date:

2 By: Date:

Sheet Title:
DEMOLITION
ELEVATIONS &
DETAILS

Sheet No.:

D-3

of 3 Sheets

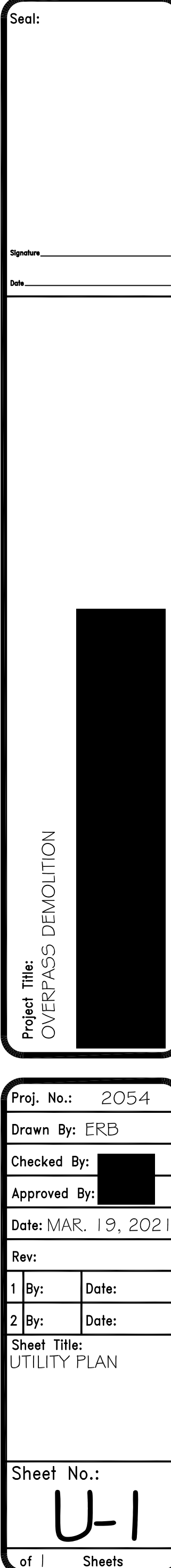
- 1** NEW TRENCH DRAIN - SEE DETAIL 1/C-1.
- 2** NEW PVC STORM SEWER PIPE (SIZE NOTED). SEE DETAIL 1/U-1. SLOPE $\frac{1}{8}$ " PER FOOT (MIN.)
- 3** EXISTING INLET/MANHOLE TO REMAIN.
- 4** NEW CONCRETE INLET - MODIFY EXISTING STORM PIPE AND CONNECT TO EXISTING STORM DRAIN PIPE. SEE DETAIL 2/U-1.
- 5** INSTALL NEW 18" x 24" QUARTZITE HAND HOLE. SEE ELECTRICAL DRAWINGS.
- 6** EXISTING STORM PIPE TO REMAIN.
- 7** NEW UNDERGROUND ELECTRICAL CONDUCTORS. SEE ELECTRICAL.
- 8** PVC DOWNSPOUT COLLECTORS.
- 9** CAP EXISTING DRAIN PIPE BELOW GRADE.
- 10** EXISTING UNDERGROUND ELECTRIC CONDUCTORS (FIELD VERIFY EXACT LOCATION).
- 11** EXISTING GAS LINE (FIELD VERIFY EXACT LOCATION).
- 12** EXISTING SANITARY SEWER LINE (FIELD VERIFY EXACT LOCATION).
- 13** EXISTING LIGHT FIXTURES TO REMAIN.
- 14** MODIFY INLET FOR NEW PIPE. GROUT PIPE INTO INLET.
- 15** REMOVE AND REPLACE EXISTING GRATE & FRAME WITH NEW. SEE DETAIL 2 ON THIS SHEET.
- 16** MODIFY FOUNDATION DRAIN. SEE SHEET S-1.

1 TYPICAL STORM DETAIL
 SCALE: 1 1/2" = 1'-0"

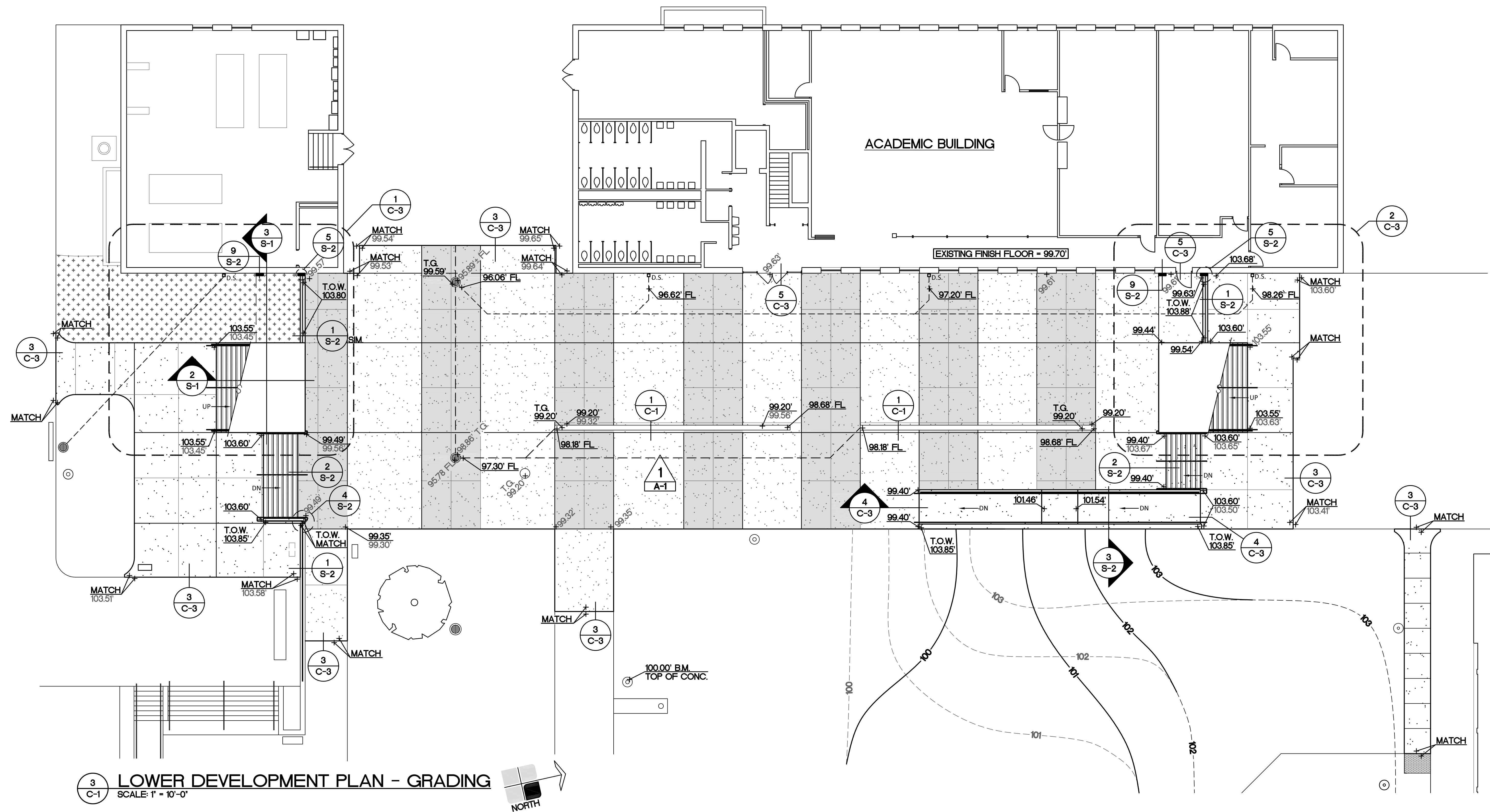
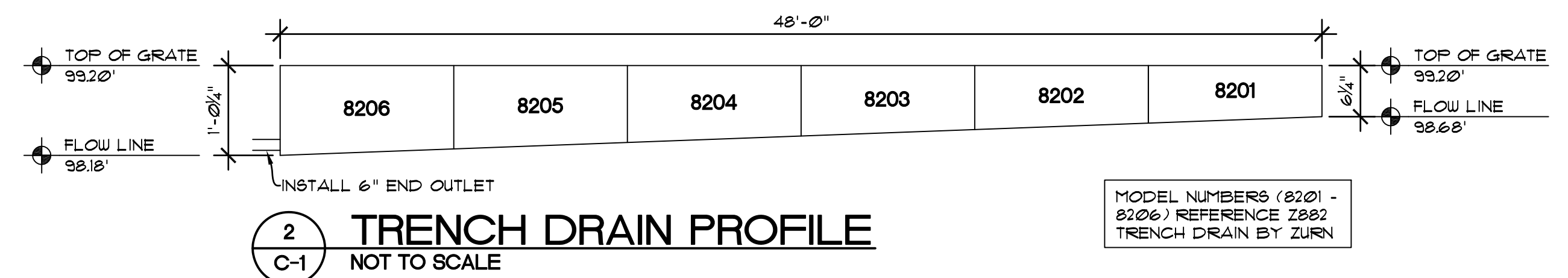
Labels for Typical Storm Detail:
 - CONCRETE - SEE DETAIL 3/C-3
 - 4" COMPACTED TYPE 'B' BACKFILL BELOW PAVING
 - BACKFILL AT LAWN AREAS WITH TYPE 'D' BACKFILL, AT PAVED AREAS WITH TYPE 'A' BACKFILL
 - NEW PIPE AS SCHEDULED
 - TYPE 'A' BEDDING
 - 4" O.D.
 - 6" (MIN) O.D. OR 1/2 O.D.
 - 4" 1/2 O.D.

2 CONCRETE INLET DETAIL
 SCALE: 3/4" = 1'-0"

Labels for Concrete Inlet Detail:
 - 1/2" EXPANSION JOINT WITH SEALANT
 - CONCRETE - SEE DETAIL 3/C-3
 - NEENAH FOUNDRY MODEL No. R-2542 FRAME AND GRATE
 - TOP OF GRATE 99.50'
 - COMPACTED BACKFILL
 - NEW 8" SCHEDULE 40 PVC STORM PIPE FROM DOWNSPOUTS
 - FLOW LINE 96.06'
 - BASE SECTION SHALL BE GROUTED IN AS NECESSARY TO PROVIDE A SMOOTH TRANSITION TO STORM PIPE
 - 2'-0" S.Q.
 - 3'-6 3/4" O.D.
 - EXISTING STORM PIPE
 - FLOW LINE 95.83'

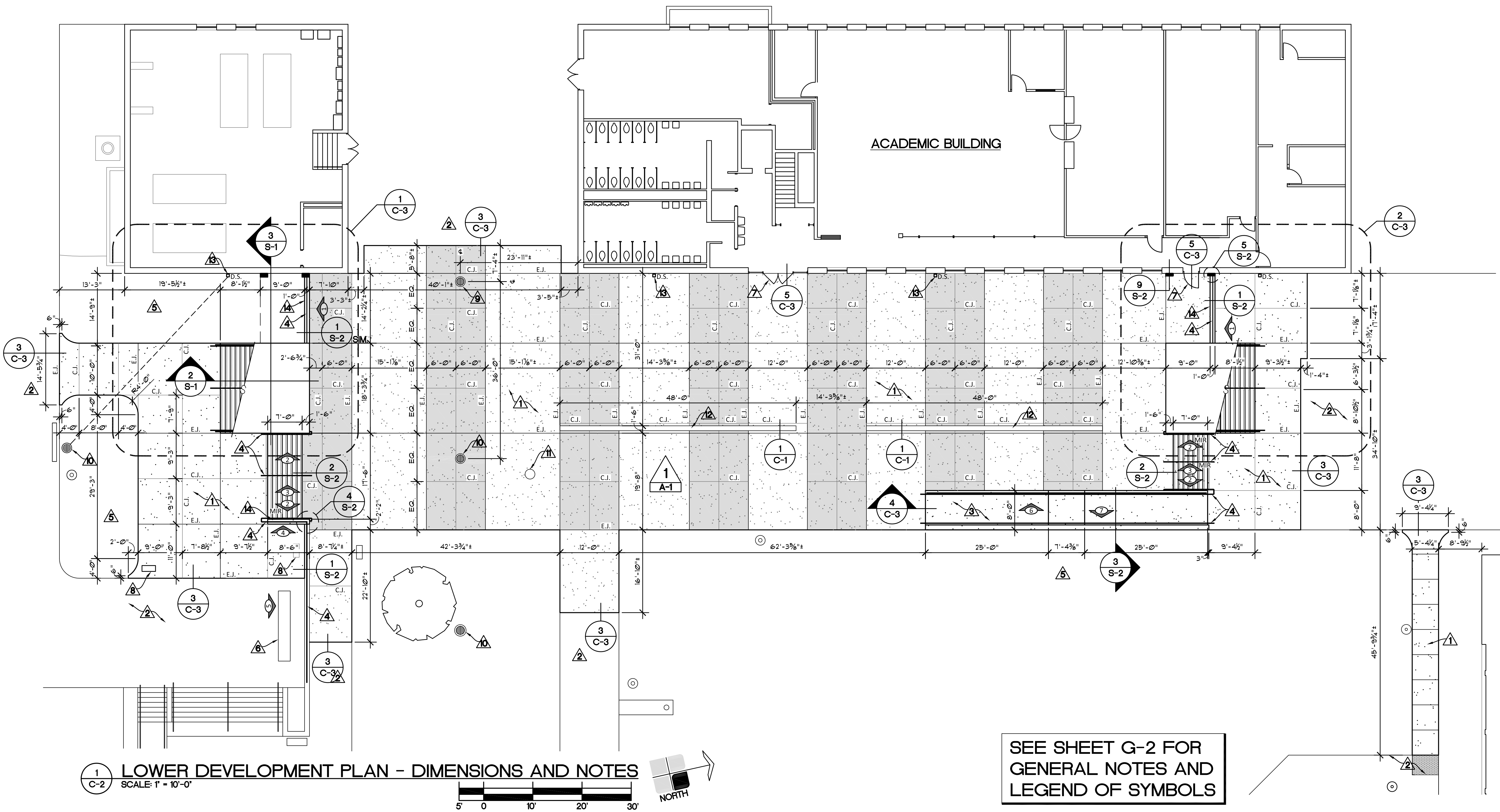


Proj. No.: 2054	
Drawn By: ERB	
Checked By:	
Approved By:	
Date: MAR. 19, 2021	
Rev:	
1 By:	Date:
2 By:	Date:
Sheet Title: LOWER DEVELOPMENT PLAN - GRADING	
Sheet No.: C-1	
of 3 Sheets	



KEY NOTES '△' - (SHEETS C-2 AND C-3)

- NEW 5" THK. REINFORCED CONCRETE OVER 4" COMPACTED STONE BACKFILL. SEE DETAIL 3/C-3. SEE SHEET G-2 FOR LEGEND INDICATING ALTERNATING CONCRETE FINISHES.
- EXISTING SIDEWALK TO REMAIN.
- NEW 5" THK. REINFORCED CONCRETE RAMP WITH TURNED DOWN EDGE OVER TYPE 'B' BACKFILL.
- METAL RAILING. SEE ELEVATIONS ON SHEET A-1.
- NEW LANDSCAPING BY OWNER. CONTRACTOR TO BRING SOIL TO FINISH GRADE.
- EXISTING CONCRETE BENCH TO REMAIN.
- EXISTING DOOR AND FRAME TO REMAIN. TAKE CARE NOT TO DAMAGE. REMOVE AND REINSTALL THRESHOLD. SET IN FULL BED OF SEALANT.
- REMOVE & RELOCATE EXISTING QUARTZITE HAND HOLE TO NEW LOCATION. COORDINATE LOCATION WITH ELECTRICAL SUBCONTRACTOR.
- NEW CONCRETE INLET - CONNECT TO EXISTING STORM DRAIN PIPE. SEE SHEET U-1.
- NEW GRATE & FRAME. EXISTING INLET TO REMAIN.
- EXISTING SANITARY MANHOLE AND COLLECTION BOX TO REMAIN.
- NEW TRENCH DRAIN. SEE DETAIL 1/C-1.
- NEW DOWNSPOUT - CONNECT TO NEW STORM DRAIN.
- NEW RETAINING WALL. SEE DETAIL 1/S-2.
- REINFORCED CONCRETE STAIR. DETAILS ON S-1 & S-2.



1 C-2 LOWER DEVELOPMENT PLAN - DIMENSIONS AND NOTES
SCALE: 1" = 10'-0"

SEE SHEET G-2 FOR
GENERAL NOTES AND
LEGEND OF SYMBOLS

Seal:

Signature:

Date:

Project Title:
OVERPASS DEMOLITION

Proj. No.: 2054

Drawn By: ERB

Checked By:

Approved By:

Date: MAR. 19, 2021

Rev:

1 By: Date:

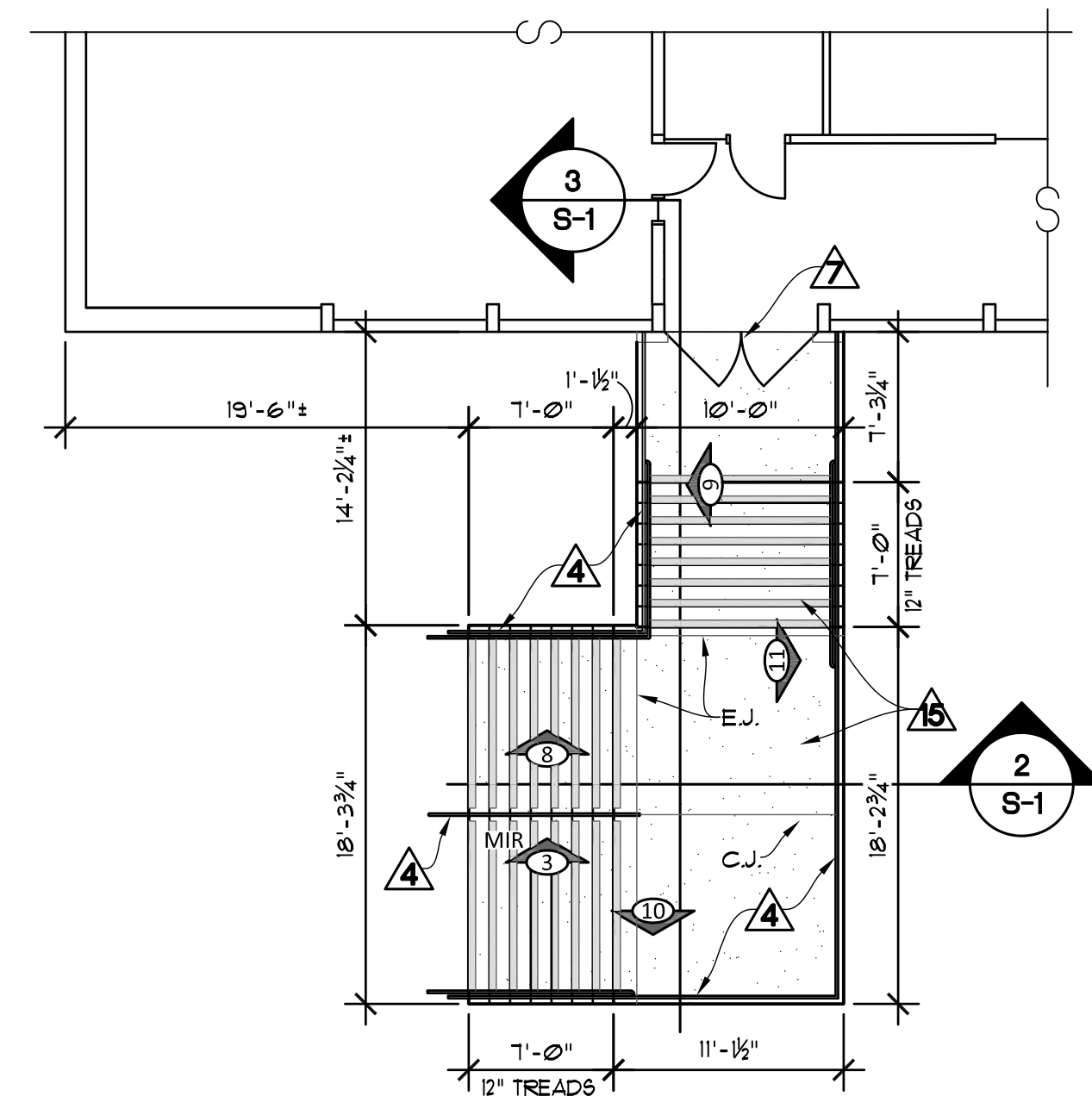
2 By: Date:

Sheet Title:
LOWER
DEVELOPMENT
PLAN -
DIMENSIONS AND
NOTES

Sheet No.:

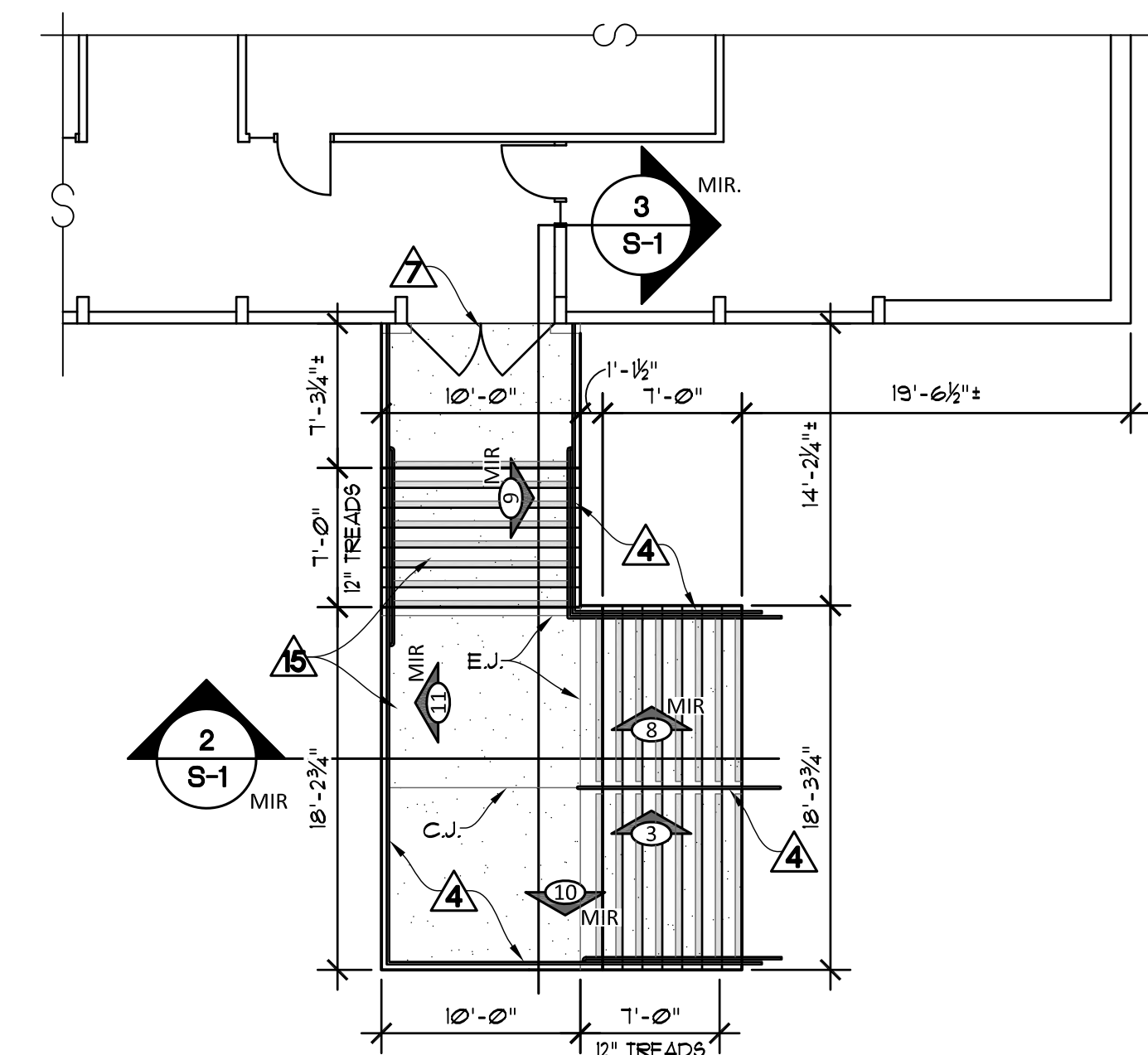
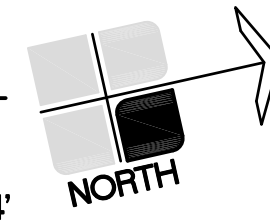
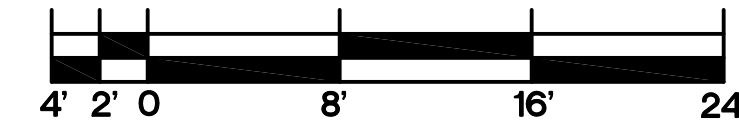
C-2

of 3 Sheets



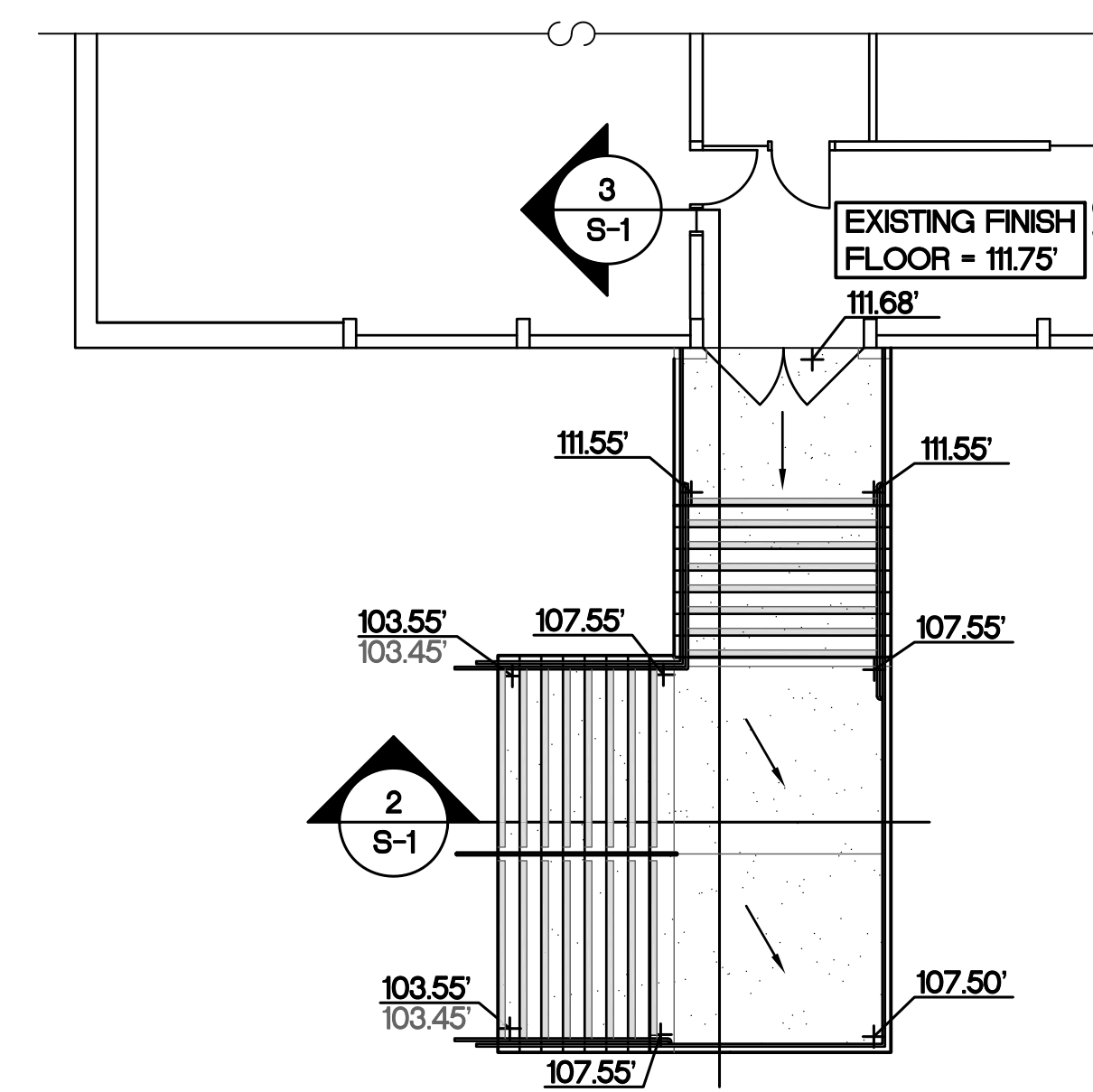
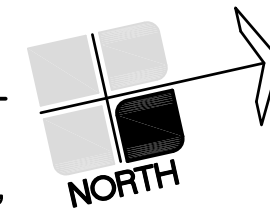
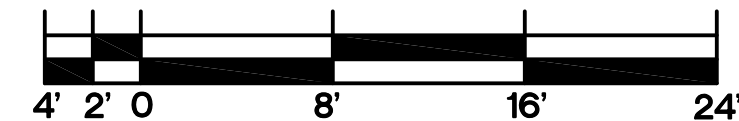
1
A-1
DIMENSIONS AND NOTES

1
C-3
LEFT UPPER STAIR PLAN
SCALE: 1/8" = 1'-0"

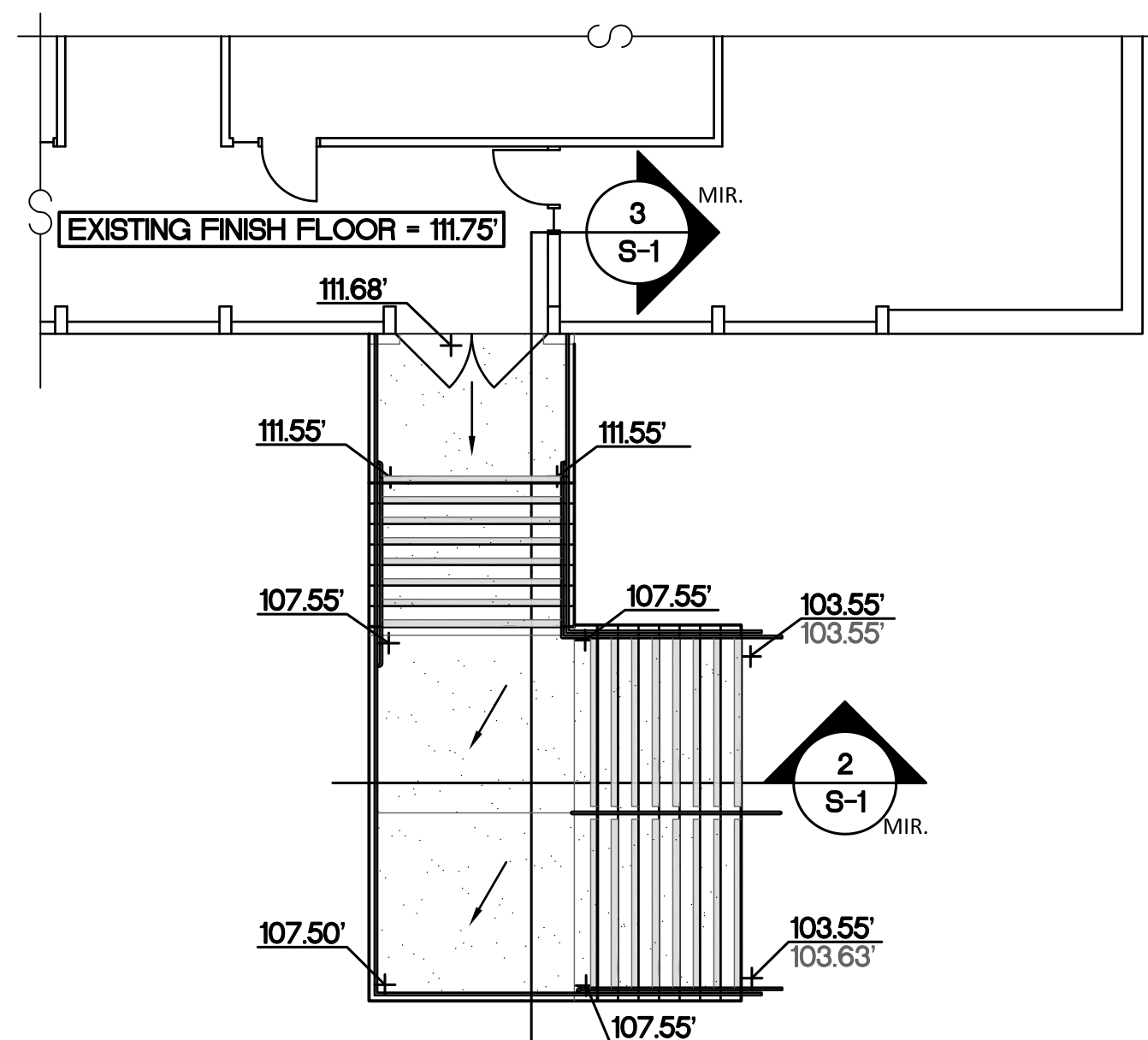


1
A-1
DIMENSIONS AND NOTES

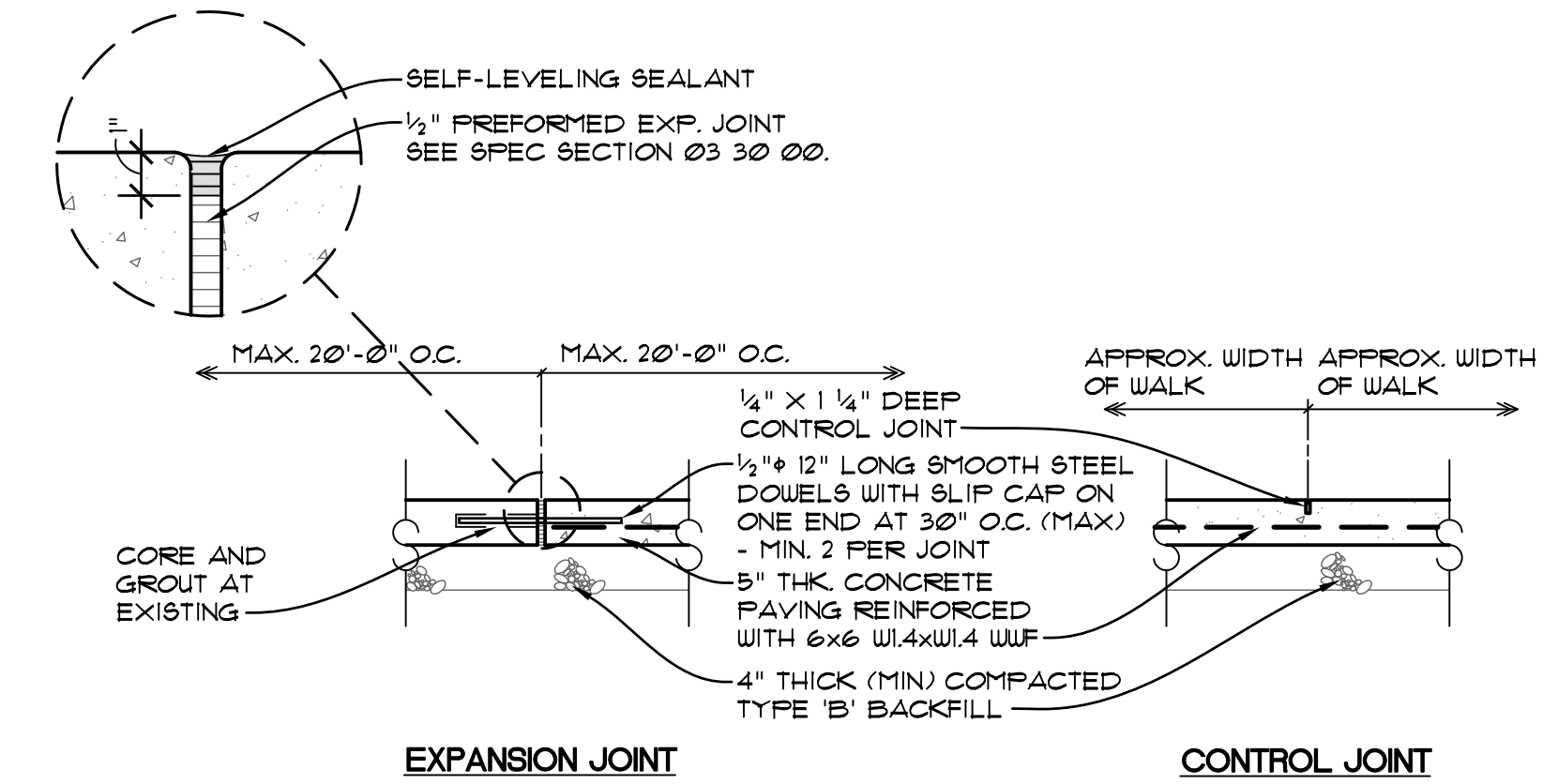
2
C-3
RIGHT UPPER STAIR PLAN
SCALE: 1/8" = 1'-0"



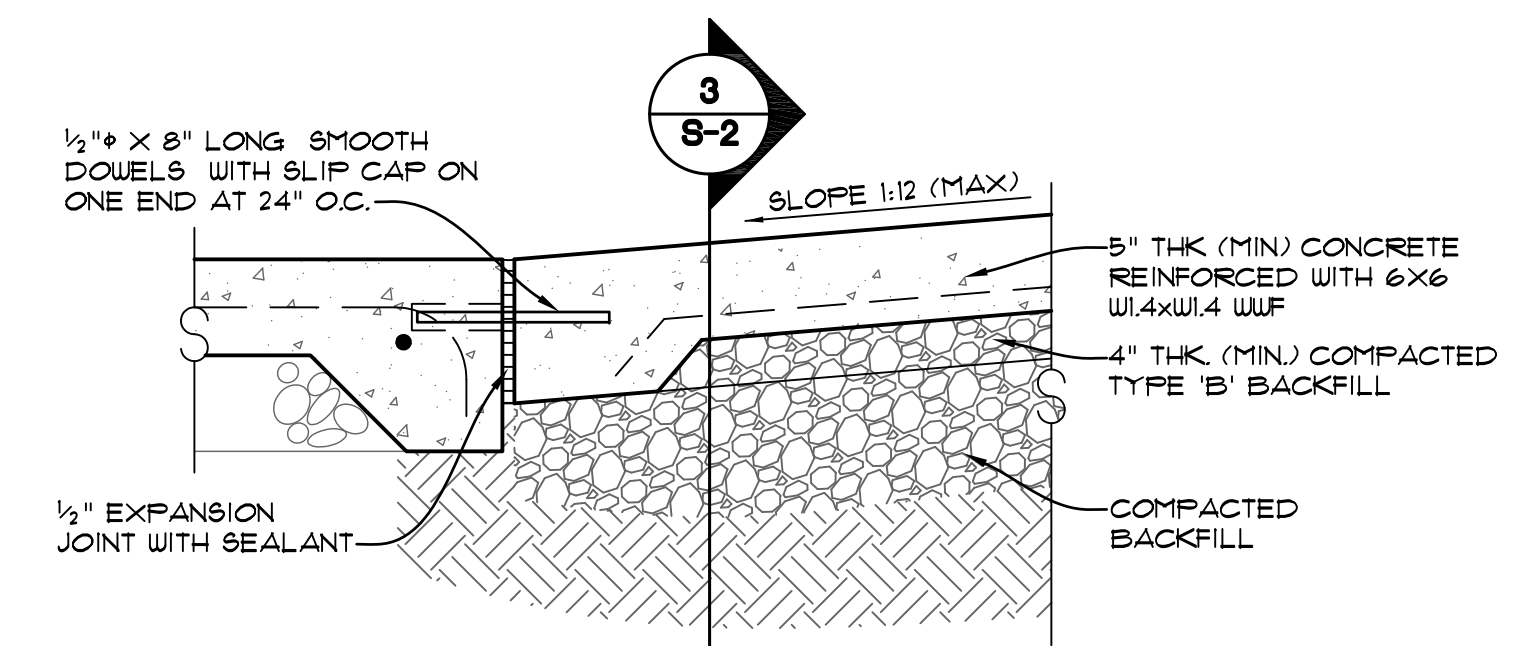
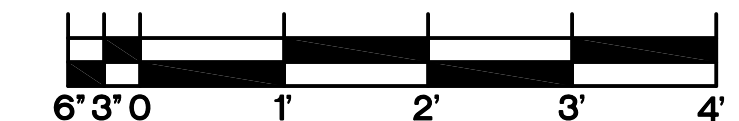
1
A-1
ELEVATIONS



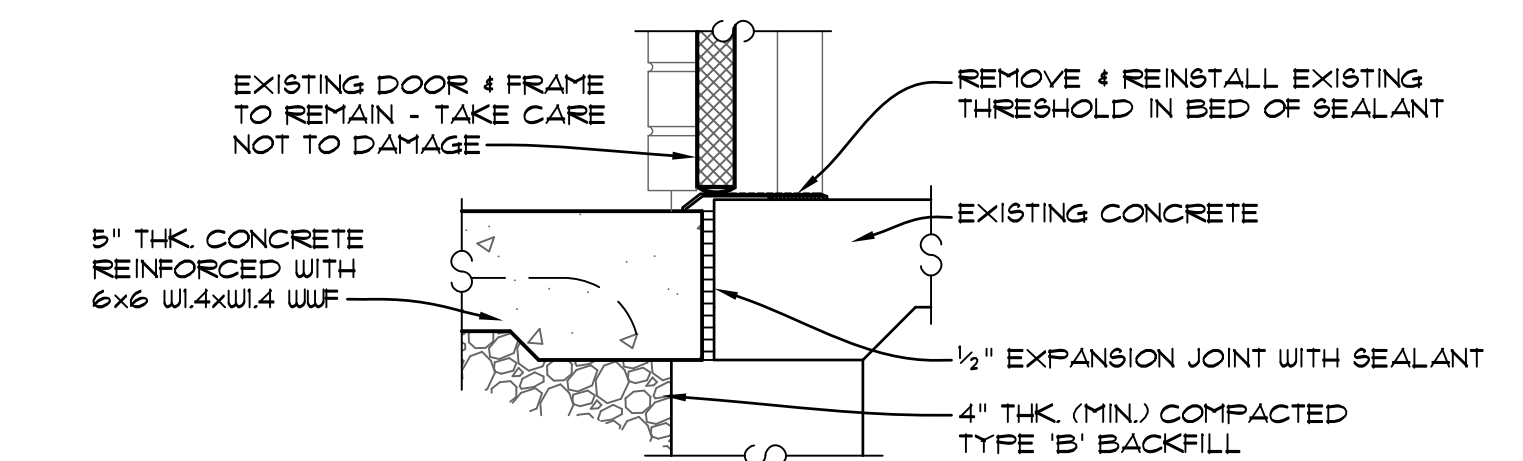
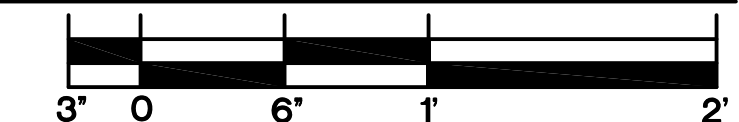
1
A-1
ELEVATIONS



3
C-3
TYPICAL SIDEWALK DETAILS
SCALE: 3/4" = 1'-0"



4
C-3
RAMP TERMINATION DETAIL
SCALE: 1 1/2" = 1'-0"



5
C-3
THRESHOLD DETAIL AT GRADE
SCALE: 1 1/2" = 1'-0"



SEE SHEET C-2 FOR KEY NOTES

SEE SHEET G-2 FOR GENERAL
NOTES AND LEGEND OF SYMBOLS

Seal:

Signature:

Date:

Project Title:
OVERPASS DEMOLITION

Proj. No.: 2054

Drawn By: ERB

Checked By:

Approved By:

Date: MAR. 19, 2021

Rev:

1 By: Date:

2 By: Date:

Sheet Title:
UPPER
DEVELOPMENT
PLANS & DETAILS

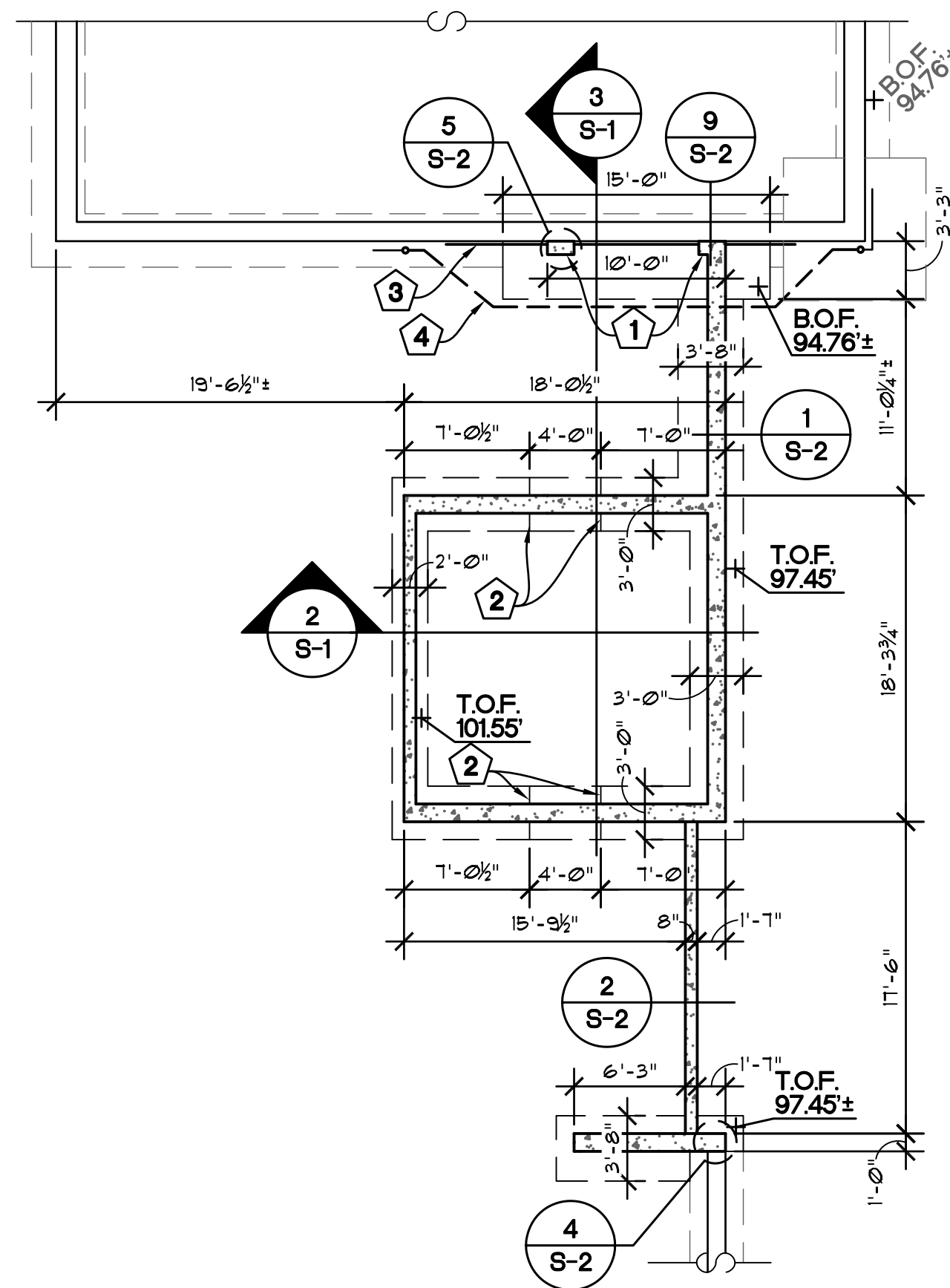
Sheet No.:

C-3

of 3 Sheets

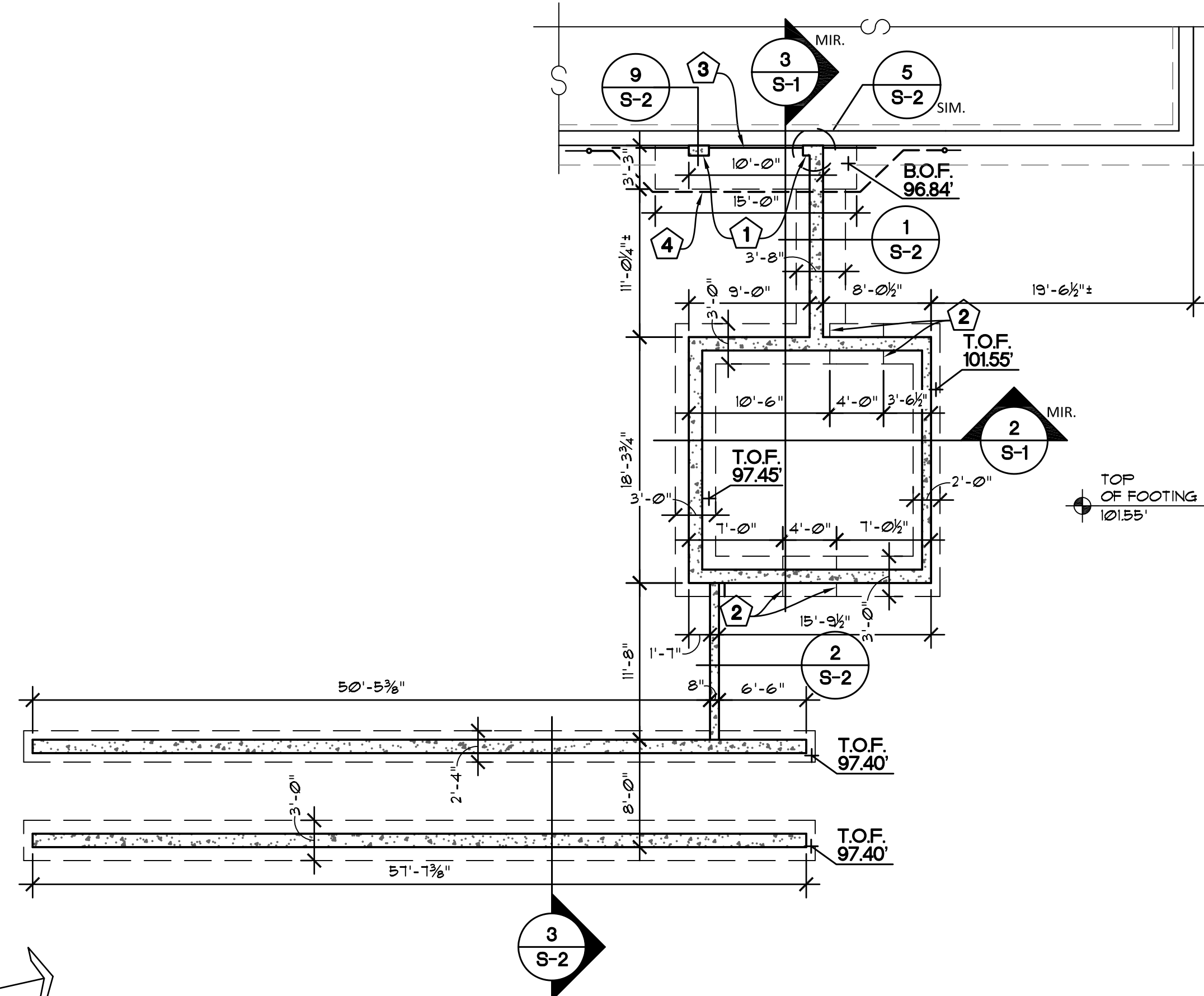
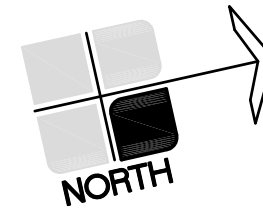
KEY NOTES ' - (THIS SHEET ONLY)

- 1 SAW CUT AND REMOVE EXISTING BRICK TO CONSTRUCT NEW CONCRETE PILASTERS.
- 2 STEP FOOTING. SEE DETAIL ON THIS SHEET.
- 3 REPAIR EXISTING FOUNDATION WATERPROOFING ON EXISTING WALLS & FOOTING AS NECESSARY DUE TO WORK IN THIS CONTRACT.
- 4 REMOVE EXISTING FOUNDATION DRAIN WITHIN LIMITS OF NEW FOOTING. PROVIDE NEW 4" PERFORATED PIPE WITH FILTER FABRIC AND CONNECT TO EXISTING.

SEE SHEET G-2 FOR
GENERAL NOTES AND
LEGEND OF SYMBOLS

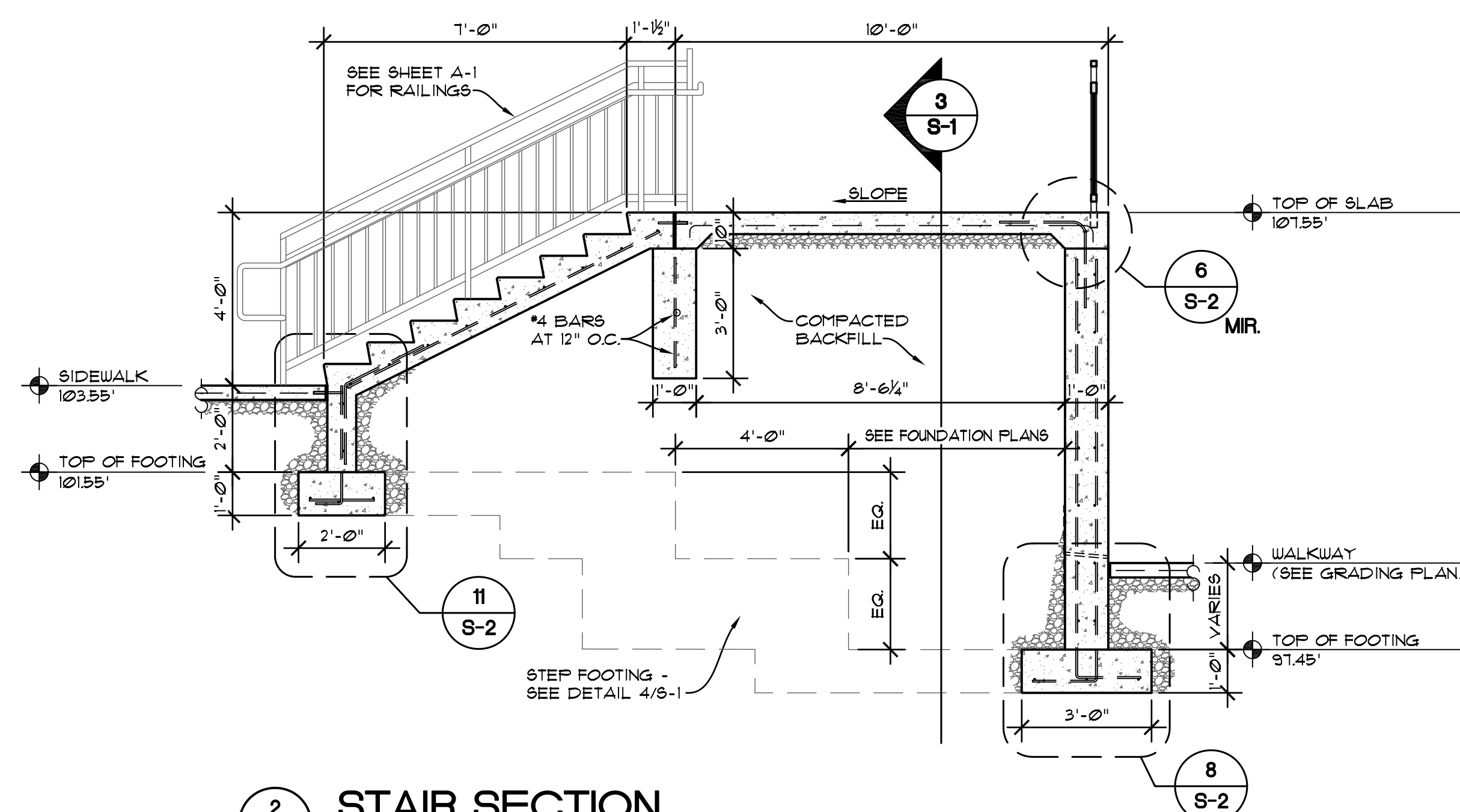
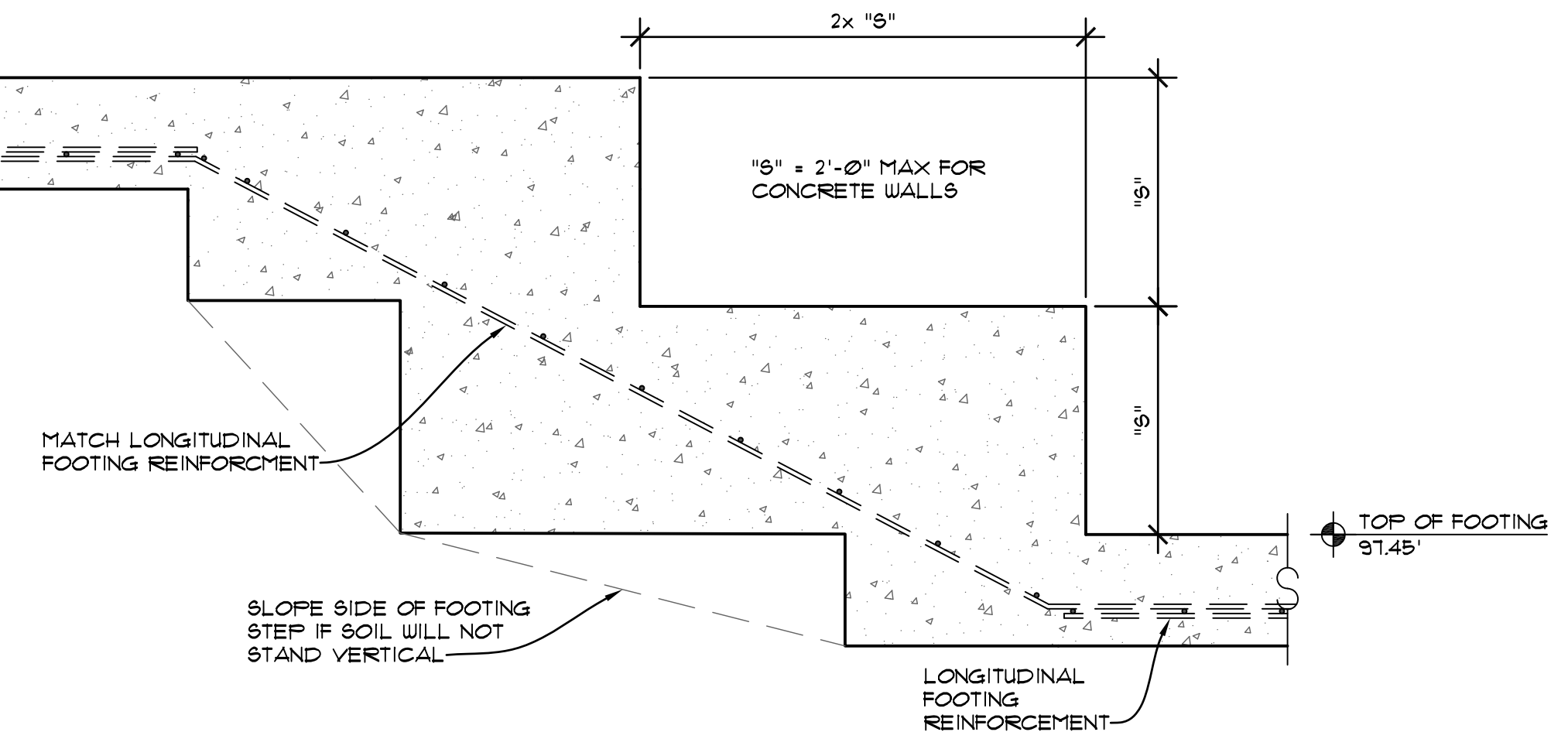
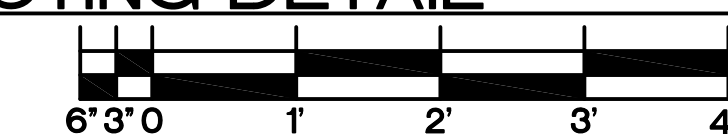
1 FOUNDATION PLANS

SCALE: 1/8" = 1'-0"



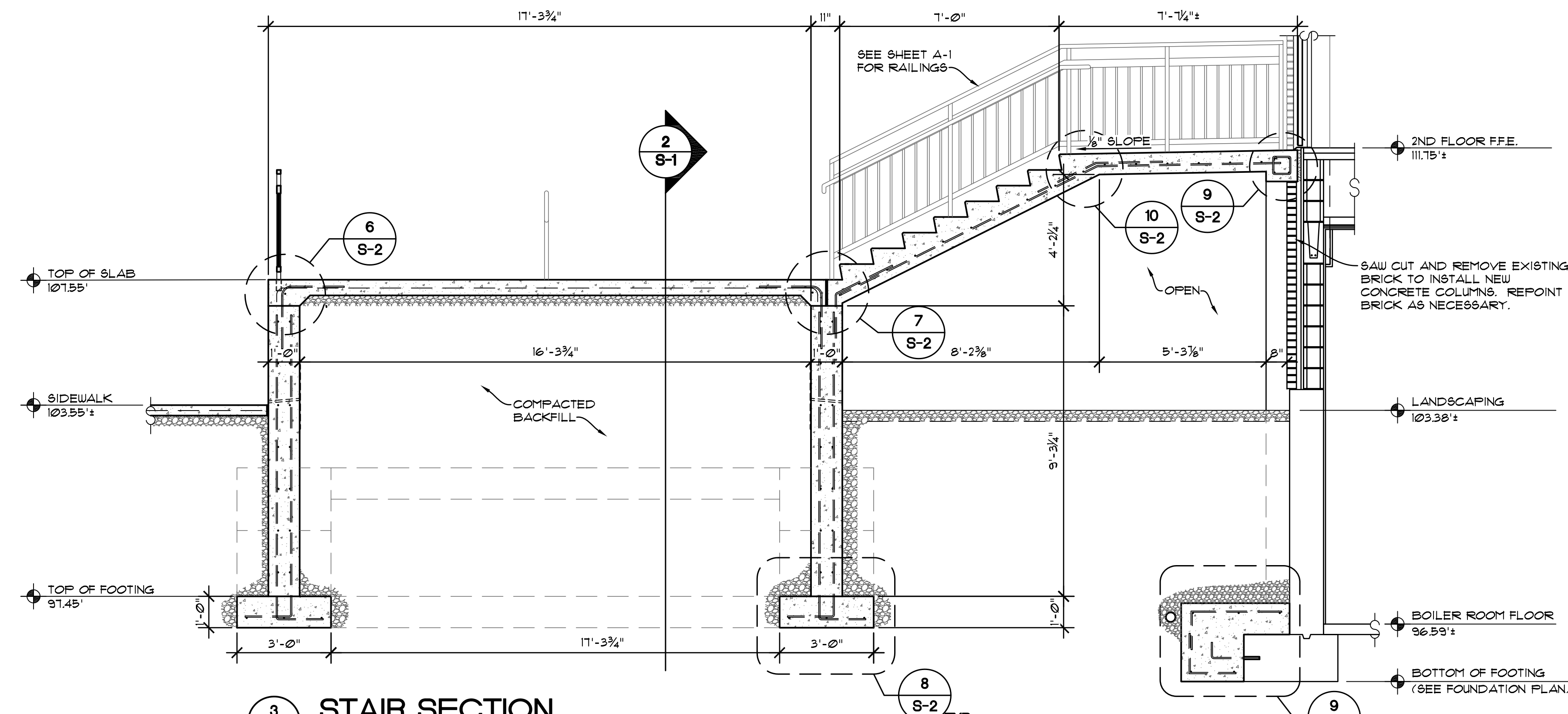
4 STEP FOOTING DETAIL

SCALE: 3/4" = 1'-0"



2 STAIR SECTION

SCALE: 3/8" = 1'-0"



3 STAIR SECTION

SCALE: 3/8" = 1'-0"



Seal:

Signature:

Date:

Project Title:
OVERPASS DEMOLITION

Proj. No.: 2054

Drawn By: ERB

Checked By:

Approved By:

Date: MAR. 19, 2021

Rev:

1 By: Date:

2 By: Date:

Sheet Title:

FOUNDATION

PLAN, STAIR

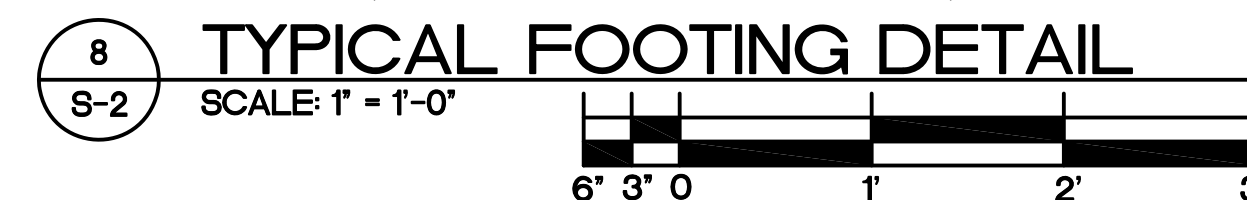
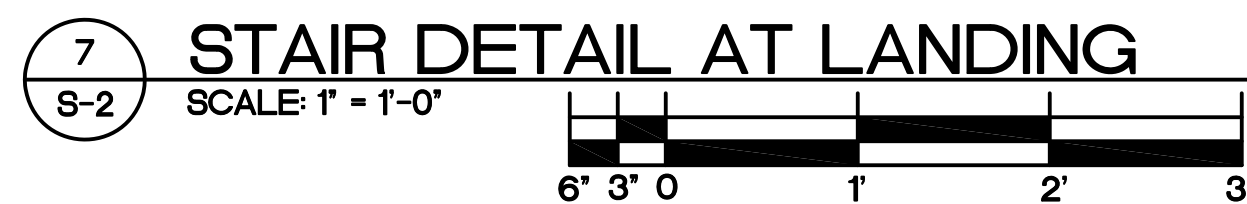
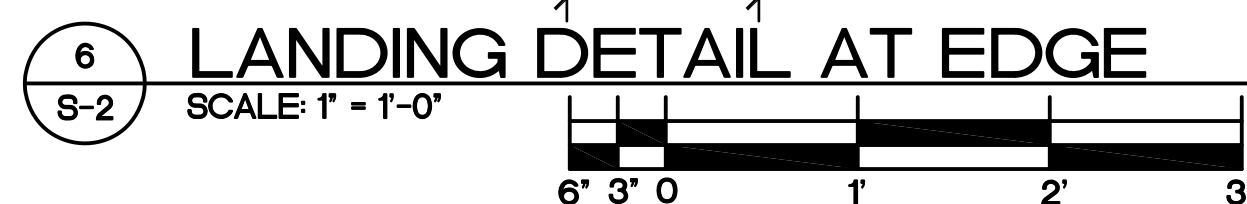
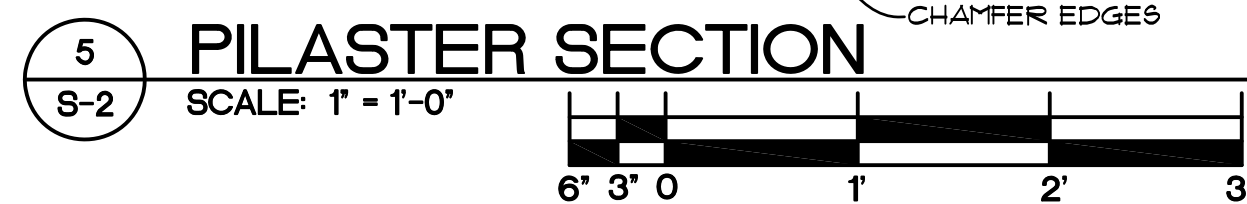
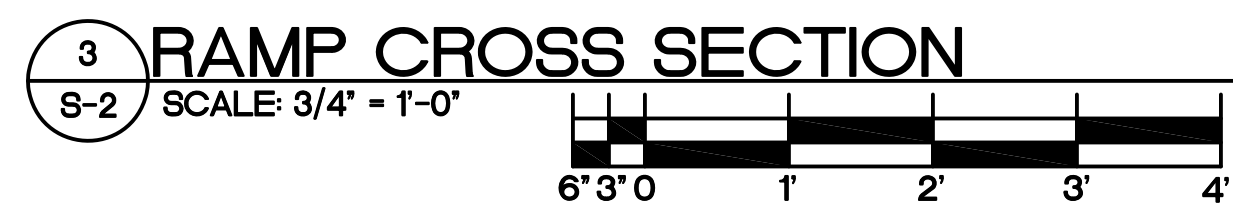
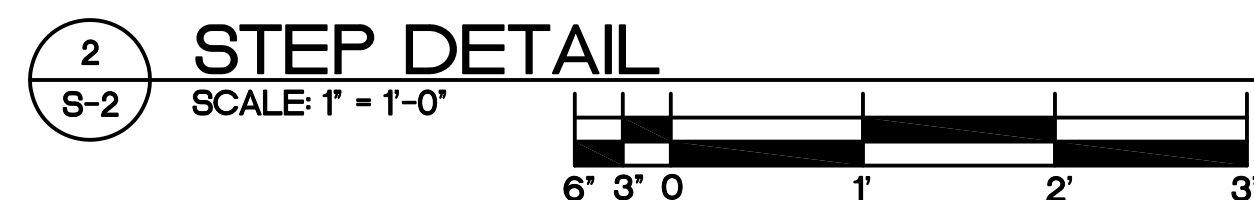
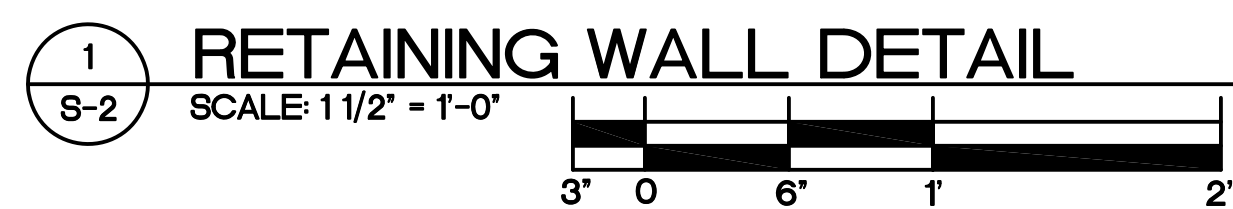
DETAILS AND

NOTES

Sheet No.:

S-1

of 2 Sheets



9
S-2

PILASTER FOOTING DETAIL

SCALE: 1" = 1'-0"

